

THE ALL NEW
DUKANE

Education. Presentation. Inspiration.

AirSlate3 Macro Key Manager User Manual



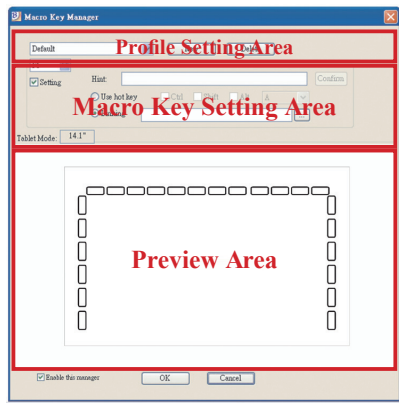
ABOUT MACRO KEY MANAGER

Macro Key Manager is a special tablet application software. Through Macro Key Manager, you can set up keyboard functions (Copy="Ctrl+C) or hyperlinks that are frequently used. You can then save these as your favorite macro keys.

There are several default profiles. Some macro keys are default macro keys for which the settings are already fixed and these cannot be modified. If the default profiles do not meet your requirements, new profiles can be created.

Since the keyboard actions operate with different software programs, the function of "open.exe" enables the macro key manager profile to function correctly. If you do not set the "open.exe" the macro key manager may work erratically with different software.

Macro Key Manager Control Panel Introduction



- **Profile Setting Area**

- Use to select, create or modify macro key profiles

- **Macro Key Setting Area**



Use to set the function of an individual Macro Key. There are two kinds of settings One is a keyboard event setting and the other is a hyperlink setting. Also, you must name the hint (this is the popup word) when completing the setup

- **Preview Area**


Shows the tablet image and the macro keys of your tablet. By hovering to the macro key, the macro key hint will pop up next to the key

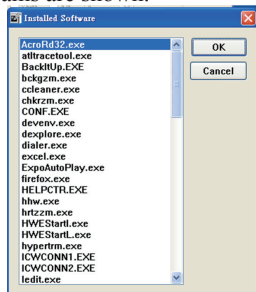
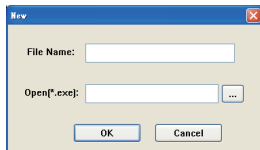
Installation

If you installed the “Macro Key Manager” and linked the tablet

to your PC, the icon “” will appear in the System Tray. However, you can choose to disable the Macro Key Manager by clicking the right button. Once you disable the Macro Key Manager or disconnect your tablet from PC, the original icon will be appear as this icon “”

How to Set up a New Macro Key Profile

1. Click “New” and name the profile.
2. If a profile is set for particular software program, click the browser icon . If not, skip this process and click “OK” to finish setting a new profile.
3. All installed software programs are shown. Click the desired software. Click “OK”
4. Click “OK” to finish this setting.



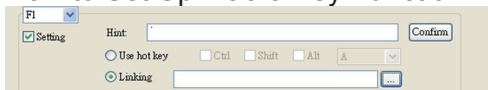
How to Modify a Profile

1. select the profile you want to modify
2. follow the macro key setup steps to modify
3. click “OK”

How to Delete a Profile

1. select the profile you want to delete
2. click “Delete”

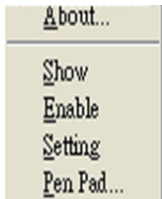
How to Set Up Macro Key Function



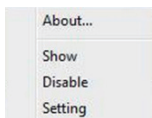
- a. click “Setting” to enable the setting function
- b. key-in the name you want to be used as macro key function hint (must enter something)
- c. define the function as “hot key” or “hyperlink”
- d. click “Confirm”

Setting:

Hover the cursor over the macro key manager icon in the system tray, and click the right mouse button to get the following menu.



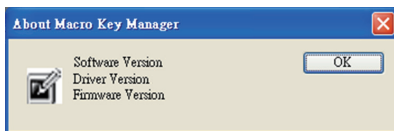
Windows 2000/XP/Vista Basic



Above Windows Vista Premium

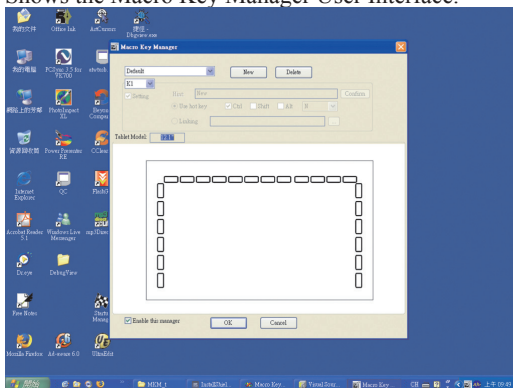
ABOUT

Shows the Macro Key Manager Version , Driver Version and Firmware Version

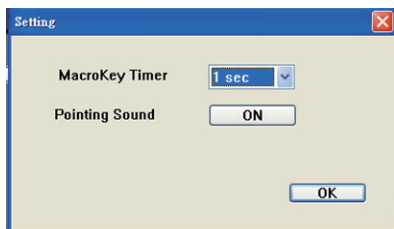


Show

Shows the Macro Key Manager User Interface.



Setting



Macro Key Time

You can set a timer for how long you must hover over the macro key before it is activated.

There are four different choices-- 0, 1, 1.5 and 3 seconds.

This means that when you use a pen to point the macro key area for 0, 1, 1.5, or 3 seconds, the macro key is activated.



Pointing Sound:

You can choose to get a pointing sound or not when the pen tip is active on the tablet.

Pen Pad (only in Windows 2000/XP/Vista basic)

This is a special tablet driver. Please refer to the driver manual.

Using the Macro Keys

After setting the profiles, you can use the macro key manager.

Please select the profile you want to use and click “OK.”

The selected profile will be the active profile.

PEN PAD DRIVER

Using the pen



Pen

The pen can be used like a normal handwriting pen. On the “About” tab, make sure the “Tracking Mode” is set to “Pen”.



Side Button On Pen

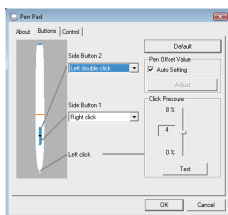
on the “Buttons” tab, click on “Side Button 1” to customize the side button.

Default settings

Side Button 1 = right click

Side Button 2 = left click

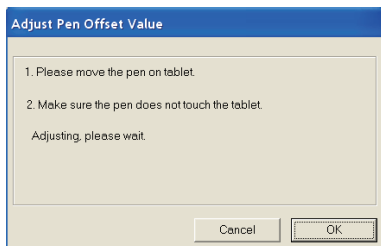
Pen Point = left click



Pen Offset Value

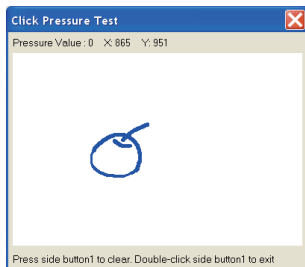
If you want to use a new pen without restarting the computer, you need to perform the “Pen Offset Value” setting.

1. On the “**Buttons**” tab, uncheck the “**Auto Setting**” box to remove the former value.
2. Click the “**Adjust**” button. Then follow the on-screen instructions for adjustment. Tap the “**OK**” box when the **OK** ” message appears.
3. Check the “**Auto Setting**” box for your computer to detect the new **pen offset value** automatically when restarted.



Click Pressure on Pen

1. On the “**Buttons**” tab, move the slider up and down to adjust the pen pressure from **0%** to **8%** (0% is the lightest, and 8% is the heaviest).
2. Click the “**Test**” button to launch the “**Click Pressure Test**” for the pen.
Then you can test if the setting is correct.



DUKANE

Dukane Corporation
Audio Visual Products Division
2900 Dukane Drive
St. Charles, Illinois 60174
866-280-4298
630-584-5156
avsales@dukcorp.com
www.dukcorp.com/av

toll-free
fax
e-mail